

# All-Optical Switch Configuration Scheme



## Overview

This tutorial covers the all-optical switches themselves – the various types, how they differ from electronic switches, where they sit in networks, what functions they perform, how they're controlled, and what they can and can't do. Coherent optics uses phase and amplitude to encode data, unlike PAM4 optics (Pulse amplitude modulation) which only uses amplitude. This allows coherent optics to be more resistant to noise. 1State Key Laboratory of Information Photonics and Optical Communications (IPOC), Beijing University of Posts and Telecommunications, 10 Xitucheng Rd, Bei Tai Ping Zhuang, Haidian Qu, Beijing, 100876, China 2IPI-ECO Research Institute, Eindhoven University of Technology, 5600MB Eindhoven, The. The aim of this paper is to build a fiber-optic network that includes the optical switch, which is the most crucial component due to its critical role in fulfilling the demands of the fiber-optic network of the future. The second tutorial covers optical switching fabric.

## All-Optical Switch Configuration Scheme



In this letter, we design an AOSM enabled all-optical switch. It contains the function modules of optical packet recognition, optical packet filtering, optical packet aggregation, etc.



In this section, using the 4 x 4 switch system as an example, the step by step instruction of how to build an optical-switch system will be given. The final systems generated by the two methods are the same.



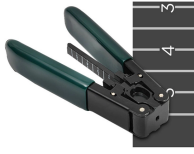
Review of optical switching, trends and needs for high-speed switching in optical networks. The latest developments in all-optical switches are discussed.



The aim of this paper is to build a fiber-optic network that includes the optical switch, which is the most crucial component due to its critical role in fulfilling the demands of the fiber-optic ...



The following table contains the possible traffic configuration values for the 400G Digital Coherent QSFP-DD optical modules, in the Transponder (TXP) and Muxponder (MXP) mode:



Currently, Huawei campus all-optical Ethernet switches have optical ports with a wide range of rates, such as GE, 2.5GE, 10GE, 25GE, 40GE, 100GE, and 160GE. The supported port rates vary between ...



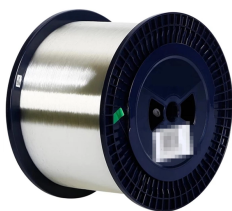
A Minimalist Approach to P.K. Alex Wai with the all-optical packet switching experiment.



The weak material nonlinearity and the high precision requirement for high-quality resonances are the two most critical hurdles in the design of all-optical switches.



This is the first of a pair of technology tutorials on all-optical switching by Geoff Bennett, vice president of technology advocacy at Marconi PLC (Nasdaq/London: MONI).



In this paper, we present a review of optical switching techniques capable of meeting the requirements of the next generation of large-scale data center networks.



In this letter, we design an AOSM enabled all-optical switch. It contains the function modules of optical packet recognition, optical packet ...

## Contact Us

For more information, pricing, or custom network solutions, please contact us:

Website: <https://hashherbcafe.co.za>

Email: [hello@hashherbcafe.co.za](mailto:hello@hashherbcafe.co.za)

Phone: +27 63 814 7295

Address: 15 Galaxy Road, Linbro Business Park, Johannesburg, 2065, South Africa

This document is for informational purposes only. Specifications subject to change without notice.

