

# AdSS Special Light-Emitting Cable



## AdSS Special Light-Emitting Cable



Learn about ADSS (All Dielectric Self-Supporting) fiber optic cables—their central tube/layered twist structures, PE/AT sheaths, benefits for power grids, and how they outperform ...



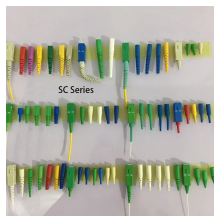
Discover everything about ADSS fiber optic cables — from types, technical features, and application scenarios to installation accessories and mechanical performance.



All-dielectric self-supporting (ADSS) cable is a type of optical fiber cable that is strong enough to support itself between structures without using conductive metal elements.



While the concentric, self-supporting cable design allows easy, one-step installation using standard hardware and installation methods, the SZ-stranded, loose tube design isolates optical fibres from ...



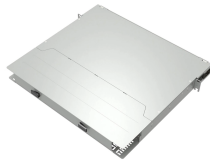
ADSS cable's full name is All Dielectric Self Supporting Cable, which is also called non-metallic all-dielectric self-supporting fiber optic cable. It is widely used in power communication systems for its ...



As its name indicates, there is no support or messenger wire required, so installation is achieved in a single pass, making ADSS an economical and simple means of building a fiber optic network.



Pysmian's ezSPAN® ADSS provides reliable self-support performance for up to 1200 feet (365 meters). Each ezSPAN® ADSS cable is custom engineered for each application based on its full weather ...



This outstanding, cost-effective solution is an excellent choice for power distribution networks, FTTH deployments and duct installations. Lightera combines its leading ADSS cable design with its field ...



Corning single jacket ADSS cables for short span application are all-dielectric, self-supporting (ADSS) cables designed for easy and economical one-step installation in campus backbones with self ...



Our ADSS cables with Small outer diameter, light weight, flame retardant, easy to peel off, and highly flexible tight-fitting dry structure facilitates construction and maintenance, And good toughness and ...

## Contact Us

For more information, pricing, or custom network solutions, please contact us:

Website: <https://hashherbcafe.co.za>

Email: [hello@hashherbcafe.co.za](mailto:hello@hashherbcafe.co.za)

Phone: +27 63 814 7295

Address: 15 Galaxy Road, Linbro Business Park, Johannesburg, 2065, South Africa

This document is for informational purposes only. Specifications subject to change without notice.

