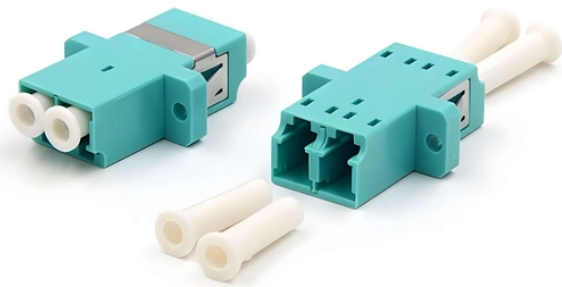


Active Optical Cable SFP



Active Optical Cable SFP



Black Box SFP28 Active Optical Cables provide premium, error-free performance for data, storage and high-performance computing (HPC) interconnectivity.



Amphenol's 10G SFP+ optical modules include SFP+ AOC. They are compliant with SFP+ MSA, SFF-8431 and SFF-8472, and are mainly used in Telecom, Wireless, InfiniBand, and ...



10G SFP+ AOC - ActiveOpticalCable offers 10G SFP+ active optical cables, which meets the needs of higher speed, greater scalability, better performance in data centers, storage network, and ...



This AOC is compliant with SFF-8431 MSA standards. It provides a cost-efficient solution as compared to using discrete optical transceivers and optical patch cables and is suitable for 10Gbps connections ...



Pivotal Optics' Active Optical Cables (AOCs) are fully integrated, plug-and-play fiber assemblies designed for short- to medium-range high-speed data links—without the need for separate transceivers.



ipolex 10G SFP+ AOC Cable - 10GBASE SFP+ Active Optical Cable, OM3 MMF Fiber with SFP+ connectors, for Cisco SFP-10G-AOC1M, Ubiquiti UniFi, Mikrotik, D-Link, Supermicro, Netgear, 1m



These 10G SFP+ assemblies are capable of transmitting data up to 10Gb/s, offering an easy installation with a flexible, multimode fiber cable.



Use our next-generation AOCs to connect between SFP+ ports, where they provide a lighter and more flexible solution than comparable copper SFP+ direct attach cables (DACs).



The 10G SFP+ Active Optical Cables are direct-attach fiber assemblies with SFP+ connectors and operate over Multi-Mode Fiber (MMF). This AOC is compliant with SFF-8431 MSA standards.



SFP+ AOC (Active Optical Cable) consists of 2x SFP+ modules and a fiber cable assembly, transmitting up to 10Gbps in each direction over a OM3 MMF with distance up to 100m.

Contact Us

For more information, pricing, or custom network solutions, please contact us:

Website: <https://hashherbcafe.co.za>

Email: hello@hashherbcafe.co.za

Phone: +27 63 814 7295

Address: 15 Galaxy Road, Linbro Business Park, Johannesburg, 2065, South Africa

This document is for informational purposes only. Specifications subject to change without notice.

