

## A building in Singapore has several optical splitters



## A building in Singapore has several optical splitters



Sinocomms offers a wide range of fiber optic splitters for all applications. All fiber optic splitters from Sinocomms are factory tested with a detailed test report in the packing case.



Our Beamsplitters are highly effective at splitting and directing light into two different paths within an optical system. Precision Optical Systems" range of Plate and Cube Beamsplitters are optimized as a ...



Optical Distribution Network (ODN) - The physical fibre and optical devices that distribute signals to users in a telecommunications network. The ODN is composed of passive optical ...



It is an optical fiber tandem device with many input and output terminals, especially applicable to a passive optical network (EPON, GPON, BPON, FTTX, FTTH etc.) to connect the main distribution ...



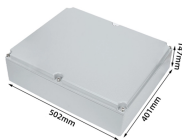
1310, 1490 and 1550 nm dual-window or three-window fiber optic coupler and splitter, PM fiber filter-type or fused-type coupler, plc splitter from Photonik Singapore



The number of preset insert units provided should meet the telecommunication needs of the building. Generally, it is recommended that every 1.8 m<sup>2</sup> of the floor space should have at least one preset ...



Optical power splitters play a crucial role as the fundamental building blocks for many integrated optical devices. They should have low losses, a broad bandwidth, and a high tolerance to ...



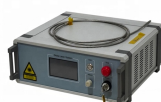
This guide focuses on two critical aspects of optical splitters that define FTTH performance: split ratios (how signals are divided) and splitting architectures (how splitters are ...



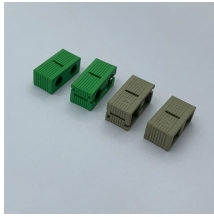
Abstract—We present our work in the area of heterogeneous optical integration, where separately manufactured electronic components are assembled on to an active silicon photonics interposer to...



Splitter placement and split ratios strongly impact the location and amount of fiber required, and hence the cost of deployment. This is followed by a brief discussion of several designs.



In an optical splitter, the input optical signal is divided into multiple output optical signals, and the energy distribution ratio of each output optical signal is limited.



The configuration below has individual splitters at a central location, but addresses that are typically not reconfigurable by jumpers, so this configuration is a “distributed” split.

## Contact Us

For more information, pricing, or custom network solutions, please contact us:

Website: <https://hashherbcafe.co.za>

Email: [hello@hashherbcafe.co.za](mailto:hello@hashherbcafe.co.za)

Phone: +27 63 814 7295

Address: 15 Galaxy Road, Linbro Business Park, Johannesburg, 2065, South Africa

This document is for informational purposes only. Specifications subject to change without notice.

