

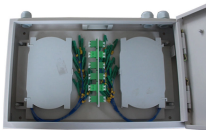
800G Optical Module DML Output



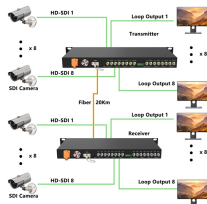
800G Optical Module DML Output



Cisco QSFP-DD and OSFP 800G ZR/ZR+ digital coherent optics modules enable 800G traffic over amplified Dense Wavelength-Division Multiplexing (DWDM) links up to 120 km for 800ZR ...



Amphenol's 800G OSFP optical modules include 2xDR4(plus), 2xFR4(plus), 2xLR4, AOC, and AOC break-out series, which adopt LC or MPO optical ports and are compatible with IEEE802.3, OIF ...



The OpenZR+ versions support multi-rate coherent transmission with line modes ...



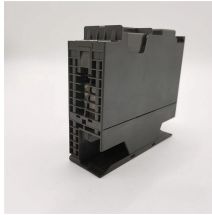
We will explore the emergence, technical standards, packaging, types, and applications of 800G modules, and answer common questions to help you make informed decisions when selecting ...



The OpenZR+ versions support multi-rate coherent transmission with line modes of 800G, 600G, and 400G. High transmitter optical output power enable the transceivers to be compatible with deployed ...



As shown in below figure, the transmitter path of the transceiver contains an 8x25Gbps 2xCAUI-4 electrical input with Equalization (EQ) block, optical multiplexer, DML laser driver, ...



The key laser technologies used in 100G/200G/400G/800G transceivers are EML and DML. So what are the differences between them? This article will discuss the basics of EML and ...



The modulator chirp can be optimized for each channel and for a given maximum reach. Below, the black curve shows baseline performance, and the blue and red curves show optimization for Ch1 and ...



This transceiver is a high performance module for short-range multi-lane data communication and interconnection applications. It integrates eight data lanes in each direction with 8x53.125GBd.



Use this guide to learn about the Juniper Networks® 800G optical transceivers and cables, their specifications, and how to install, remove, and maintain these transceivers. 800 Gigabit ...



The high bandwidth module supports dual 400G Ethernet connections, octal 100G Ethernet connections, or a single 800G Ethernet connection over parallel single-mode fiber links up to 2 km.

Contact Us

For more information, pricing, or custom network solutions, please contact us:

Website: <https://hashherbcafe.co.za>

Email: hello@hashherbcafe.co.za

Phone: +27 63 814 7295

Address: 15 Galaxy Road, Linbro Business Park, Johannesburg, 2065, South Africa

This document is for informational purposes only. Specifications subject to change without notice.

