

72-port fiber optic patch panel



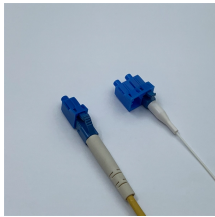
72-port fiber optic patch panel



The LCX rack-mount patch panel features up to 144 SC/UPC or 288 LC/UPC ports in 4RU for a standard density application that allows users to maximize rack space into a condensed panel.



Download the data sheet below to find out more information about FTM-700. The FTM-700, 72-port rack mount distribution patch panel can be customized to meet the specific termination, interconnection, ...



AMPCOM 72-port ODF supports SC multimode fiber with pigtailed and couplers, cold-rolled steel housing, and pull-out splice trays. Ideal for scalable fiber management in data centers.



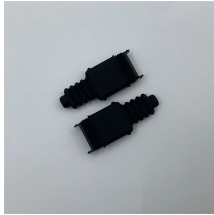
Our Preloaded Patch Panels are a very affordable option for organizing fiber optic networks. Available in Single and Multi-mode options, these loaded Fiber Distribution boxes come in 12, 24, 36, 48, 72 96 ...



Configured for Polarity A and designed for implementations in 40G/100G ...



Product Overview Suitable Applications: Fiber Express solution for Backbone, Telecommunication Room, Main Distribution room and Data centers



Norden EFA Fiber Optic Patch Panel is designed for fibre termination and distribution. This smart design and professional engineering provides easy installation and maintenance.



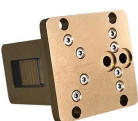
EDGE Panels are available with six 12-fiber MTP adapters. Each panel features translucent shuttered adapters with translucent shuttered MTP reversible adapters at the front of the panel.



Configured for Polarity A and designed for implementations in 40G/100G networks, this fiber optic patch panel is designed for Data Centers, Telecommunication and Enterprise network environment.



Fibertronics, Inc. presents a comprehensive selection of fiber optic patch panels and termination kits, catering to various needs. Choose from configurations including 12 fiber 24 core, 48, 72, and 144 ...



The CNS072P is a rack mountable fiber patch and splice panel designed to accommodate up to 72 terminations/splices. The CNS072P provides a compact and versatile method of splicing and ...

Contact Us

For more information, pricing, or custom network solutions, please contact us:

Website: <https://hashherbcafe.co.za>

Email: hello@hashherbcafe.co.za

Phone: +27 63 814 7295

Address: 15 Galaxy Road, Linbro Business Park, Johannesburg, 2065, South Africa

This document is for informational purposes only. Specifications subject to change without notice.

