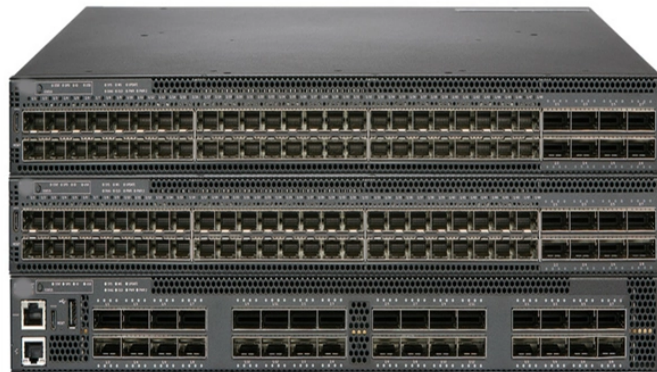


60kV busbar of small substation



60kV busbar of small substation



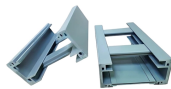
Different types of clamps are available for use: Tension clamps : Wedge, bolted, compression. Non-tension clamps: T-connectors, parallel groove, flexible bus supports, conductor spacers.



This document defines the PG& E design criteria for physical/electrical arrangement for the bus configurations found in outdoor substations, unit substations, and switching stations. Underground ...



The document discusses the design process for bus bars in electrical substations. It involves: 1) Choosing the conductor cross-section based on normal current and temperature rise limits.



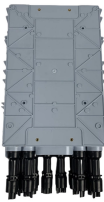
This guide provides a detailed technical description, calculations, design considerations, and best practices for designing busbar systems in substations.



Learn how to design efficient substation busbar systems with calculations, examples, and best practices.



Here, we provide an overview of common substation busbar configurations—Single Bus, Main and Transfer, Double Breaker/Double Bus, Ring Bus/Ring Main, and Breaker and a Half.



In an electrical substation, it is important to choose the correct busbar size to ensure safety, thermal stability, mechanical strength, and compliance with regulatory standards. Read this chapter to learn ...



An essential element within substations is the busbar - a critical component responsible for carrying large volumes of electrical current. In this comprehensive article, we explore innovative busbar ...



This technical article explains six most common bus configurations used for distribution, transmission, or switching substations at voltages up to 345 kV. Presented single line diagrams and ...



The information in this design guide is applicable to both rigid bus and strain bus designs for outdoor and indoor, air-insulated, alternating current substations.

Contact Us

For more information, pricing, or custom network solutions, please contact us:

Website: <https://hashherbcafe.co.za>

Email: hello@hashherbcafe.co.za

Phone: +27 63 814 7295

Address: 15 Galaxy Road, Linbro Business Park, Johannesburg, 2065, South Africa

This document is for informational purposes only. Specifications subject to change without notice.

