

## 40G Coherent Optical Module from Mexico



✓ IP65/IP55 OUTDOOR CABINET

✓ OUTDOOR MODULE CABINET

✓ OUTDOOR 5G BASE STATION CABINET

✓ WATERPROOF



## 40G Coherent Optical Module from Mexico



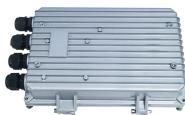
The QSFP-4010-LR4 is a long range single-mode 40G QSFP+ optical module compatible with the 40GBase-LR4 specifications. It uses 4 CWDM 10G lasers running 1271~1331nm and combining ...



Get effortless 40G connectivity with our 40G Multimode MPO DCI Coherent QSFP Optical Module. Boost your DCI optical modules speed today!



The QSFP-4010-LR4 is a long range single-mode 40G QSFP+ optical module compatible with the 40GBase-LR4 specifications. It uses 4 CWDM 10G lasers ...



GIGALIGHT provides 100G, 200G, and 400G pluggable digital coherent optical transceiver modules (DCO) for data center interconnection (DCI), 5G backhaul, metro telecommunication, and other long ...



Coherent's FTL410QD4C QSFP+ transceiver modules are designed for use in 40 Gb/s links over parallel multimode fiber, including breakout to four 10 Gb/s links. They are compliant with ...



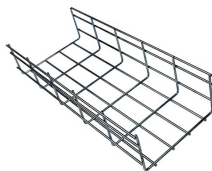
Wave Thought Tech 40GBASE QSFP+ is a portfolio of optical transceiver modules designed upon Multi-Source Agreement (MSA) of high-density and low-power 40 Gigabit Ethernet connectivity options for ...



Coherent FTL4C1Q 40GBASE-LR4 QSFP+ Optical Transceivers are designed for use in 40Gb Ethernet links over single-mode fiber (SMF). These FTL4C1Q modules feature power ...



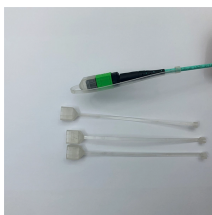
FS 40G QSFP+ optical transceiver module solutions offer a full range of QSFP+ modules from 150m to 80km reach, and used for high-density switching, routing and data center applications.



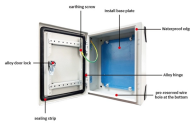
Coherent's QSFP+ optical transceiver modules are used in enterprise and datacenter networks. View price, stock and buy direct from Transceiver USA.



Wave Thought Tech 40GBASE QSFP+ is a portfolio of optical transceiver ...



Designed for 40 Gigabit per second communications, the FTL4C1QE2C QSFP+ transceiver modules are suitable for single mode fiber connections and adhere to QSFP+ MSA and IEEE 802.3ba 40GBASE ...



They are equipped with a fully C-Band tunable optical interface and can be used with any optical line system with flexible channel spacing tailored to the data rate mode.

## Contact Us

For more information, pricing, or custom network solutions, please contact us:

Website: <https://hashherbcafe.co.za>

Email: [hello@hashherbcafe.co.za](mailto:hello@hashherbcafe.co.za)

Phone: +27 63 814 7295

Address: 15 Galaxy Road, Linbro Business Park, Johannesburg, 2065, South Africa

This document is for informational purposes only. Specifications subject to change without notice.

