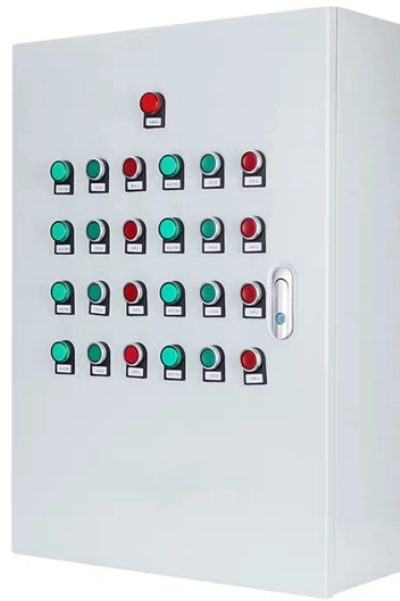


## 35kV busbar bridge discharge sound



## 35kV busbar bridge discharge sound



Suitable for the high voltage electrical apparatus of power plant, power transformer station at or under 35kV, such as cable branch box, combination transformer and incoming / outgoing line of GIS system.



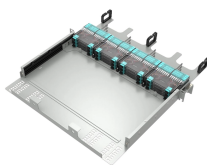
P6JAT3 Production Testing IEEE requires a Partial Discharge test and choice between AC withstand and Impulse. Richards runs 3/3 tests on all Medium Voltage products governed by IEEE 386.



The document then discusses the electrical main wiring designs for the substation, including selecting the main transformer capacity and type, designing the substation, and selecting a bus bar scheme.



For an internal fault, the busbar protection must identify the faulted bus segment, and trip the circuit breakers attached to that bus segment. This requires the busbar protection to use a dynamic bus ...



Certification of momentary current testing, impulse testing and heat rise are available upon request. Partial discharge sensing and monitoring is available as an option for medium voltage applications. ...



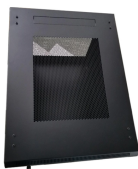
For all metering installations (secondary, 15kV, 25kV, & 35kV), refer to Section AOJ in the APCO Company Specific Section of the Southern Company Overhead Distribution Standards.



This allows one to describe bus common arrangements without creating or transmitting drawings. Typical model number arrangements follow; these may be modified to accommodate any possible ...



Purpose: These specifications and drawings provide general minimum requirements for constructing standard wood pole structures and assemblies for 34.5 kV through 69 kV transmission lines.



When a 35kV line grounding fault occurs, the Wan'an substation's 35kV busbar issues a grounding alarm.



Our company has had its share of partial discharge issues within its 15kV and 35kV metal clad switchgear. We've had an internal bus failure with 2 weeks of cleanup and re-covering the flat ...

## Contact Us

For more information, pricing, or custom network solutions, please contact us:

Website: <https://hashherbcafe.co.za>

Email: [hello@hashherbcafe.co.za](mailto:hello@hashherbcafe.co.za)

Phone: +27 63 814 7295

Address: 15 Galaxy Road, Linbro Business Park, Johannesburg, 2065, South Africa

This document is for informational purposes only. Specifications subject to change without notice.

