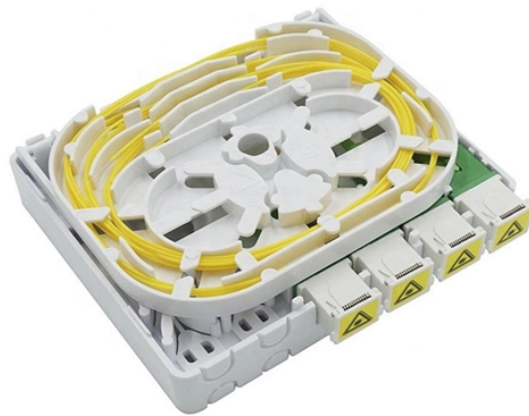


24-core direct-buried armored optical cable



24-core direct-buried armored optical cable



Which applications are best suited for 24-core GYTY53 fiber optic cables? 24-core GYTY53 cables are ideal for outdoor backbone and access networks, particularly in direct-buried routes, tunnels, or ducts ...



Which applications are best suited for 24-core GYTY53 fiber optic cables? 24-core ...



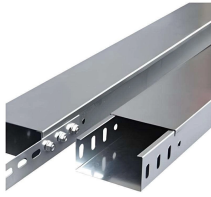
Plenum Armored Fiber Cable is our most popular choice for its versatility and can be used in riser or general-purpose applications as well. The MC cable is tough and durable to ensure that rodents can't ...



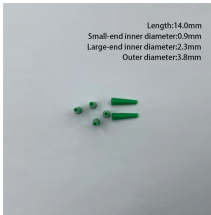
These corrugated steel tape and aluminum tape armored and double sheath cables are suitable for installation in harsh environments where mechanical impact on the cable is to be expected, ...



ALTOS® gel-free, double-jacket, single-armored cables are rugged, armored cables designed for direct-buried installation while suitable for duct and aerial (lashed) installation.



These fiber optic cables can be easily identified due to their vividly colored jackets. Our armored fiber optic cables can be used for horizontal installations and general-purpose applications, depending on ...



Buy Superior Essex 24 Strand OM4 Direct Burial Fiber for outdoor applications demanding strength, signal reliability and ease of installation. The direct burial fiber optic cable is sold by the foot and ...



Durable 24-core GYTY53 fiber optic cable for direct burial, featuring steel tape armor, moisture resistance, and low attenuation. Ideal for harsh environments.



Enhance your network with BLACKSTONE Armored Direct Burial : 24 Cores, OM4, 12.3 mm design, PE, Black finish for reliable performance.



Built to IRS:TC 55-2006 Rev.1 and RDSO/SPN/TC/110/2020 Rev.0 standards, it features 24 single-mode fibers, corrugated steel armor, and UV-resistant HDPE sheath. Designed for underground ...



The most commonly deployed outdoor cable design, with fiber counts from 12 to 432 fibers. Armored construction provides crush and rodent protection in direct-buried installations.

Contact Us

For more information, pricing, or custom network solutions, please contact us:

Website: <https://hashherbcafe.co.za>

Email: hello@hashherbcafe.co.za

Phone: +27 63 814 7295

Address: 15 Galaxy Road, Linbro Business Park, Johannesburg, 2065, South Africa

This document is for informational purposes only. Specifications subject to change without notice.

