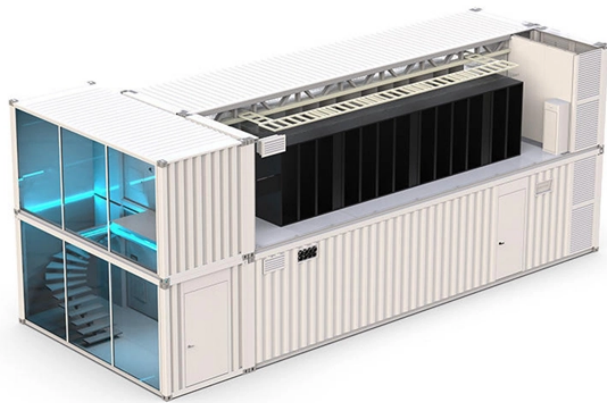


## 19-inch chassis with low temperature resistance



## 19-inch chassis with low temperature resistance



The 19-inch aluminum rackmount enclosure is designed for standard equipment racks in industrial and instrumentation environments. Manufactured from lightweight yet durable aluminum, it ensures ...



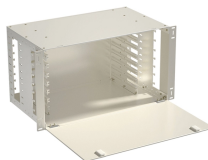
Industrial control box, Junction box, Distribution box, Audio amplifier chassis, and more. Choose from a wide range of over 48,000 items, and with no purchase quantity requirements, you can simply ...



You can mount 4x 2.5" Hard drives on a crossbeam inside the case. The crossbeam is also equipped with a slot card holder to ensure a safe usage. The lockable doors in front of the slots prevent, ...



It is Ultra-Compact 3U Server Chassis with a depth of only 11.8 inches or 303mm. However, even with a smaller size, it has all the benefits of a larger Server case.



Pre-drilled and assembled 2U rackmount enclosure for easily mounting projects on a standard 19" rack. Heavy-duty steel chassis with pre-drilled aluminum face.



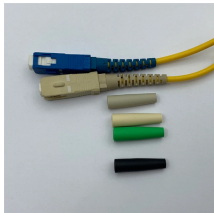
Shop high-quality 19 inch aluminum chassis for industrial and server applications. Durable, customizable, and reliable. Bulk orders and OEM available.



How do you cool high-power embedded systems in sealed enclosures? What cooling technologies are available in SCHROFF enclosures? What features make MIL-certified 19" cabinets like Varistar CP ...



ERack is up to 30% lighter than other rack cases in its class. ERack has access to the front and rear 19-inch chassis via precision ...



Powerful 19" rack-mount chassis platforms from commercial grade to full MIL-STD for a wide range of integrated rack-mount applications.



This guide gives you a clear, practical overview of 19-inch industrial chassis design, the differences between steel and aluminium, key finishing methods, and what to consider when ...



ERack is up to 30% lighter than other rack cases in its class. ERack has access to the front and rear 19-inch chassis via precision manufactured interchangeable lids. Each lid is secured to the rack body by ...

## Contact Us

For more information, pricing, or custom network solutions, please contact us:

Website: <https://hashherbcafe.co.za>

Email: [hello@hashherbcafe.co.za](mailto:hello@hashherbcafe.co.za)

Phone: +27 63 814 7295

Address: 15 Galaxy Road, Linbro Business Park, Johannesburg, 2065, South Africa

This document is for informational purposes only. Specifications subject to change without notice.

