

## 100base-tx multimode fiber



## 100base-tx multimode fiber



The MC100CM is a media converter designed to convert 100BASE-FX fiber to 100Base-TX copper media or vice versa. Designed under IEEE 802.3u 10/100Base-TX and 100Base-FX standards, the ...



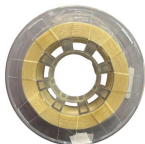
The MC100CM is a media converter designed to connect 100BASE-FX fiber to 100Base-TX copper and vice versa. Complies with IEEE 802.3u 10/100Base-TX and 100Base-FX standards, the MC100CM is ...



The unmanaged media converter provides an interface between 10/100BASE-TX RJ45 ethernet and 100BASE-FX multimode ST ports. This allows the user to integrate fiber optics into a copper ...



This media converter 10/100base-tx to 100base-fx supports multimode fiber connections with ST connectors, offering reliable, high-speed connectivity up to 2 kilometers in industrial and commercial ...



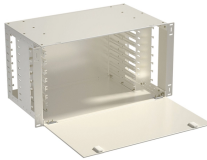
The easy implementation and expansion of 10/100Base-TX/FX networks can be further assured with this converter. This converter is completely transparent when connected so the network performs exactly ...



This converter is a Multi Mode MT-RJ Type fiber converter spanning distances up to 2km (1.2 miles). Ports include 1 x 10/100Base-TX (RJ-45) port and 1 x 100Base-FX fiber port (MT-RJ Type).



This converter is a Multi Mode ST-Type fiber converter spanning distances up to 2km (1.2 miles). Ports include 1 x 10/100Base-TX (RJ-45) port and 1 x 100Base-FX fiber port (ST-Type). All references to ...



The SBFTF Series is a that provides an interface between 10/100Base-TX ports and 100Base-FX ports, allowing users to integrate fiber optic cabling into 10/100 copper environments.



The N784-001-ST 10/100 Multimode Media Converter is an economical way to extend the distance (up to 2 kilometers) of network nodes by converting Cat5/6 UTP cables to Fiber Optic.



In summary, the key specifications of a 100BASE FX SFP—100Mbps speed, 1310nm wavelength, up to 2km reach, multimode fiber compatibility, and defined temperature ratings—directly determine its ...

## Contact Us

For more information, pricing, or custom network solutions, please contact us:

Website: <https://hashherbcafe.co.za>

Email: [hello@hashherbcafe.co.za](mailto:hello@hashherbcafe.co.za)

Phone: +27 63 814 7295

Address: 15 Galaxy Road, Linbro Business Park, Johannesburg, 2065, South Africa

This document is for informational purposes only. Specifications subject to change without notice.

