

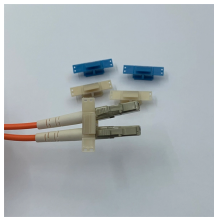
# **100Mbps Industrial-Grade Ethernet Switch**



## 100Mbps Industrial-Grade Ethernet Switch



This space-saving switch transmits data over an Ethernet network. Eight auto-negotiating 10/100 Mbps ports send data only to the devices designated to receive it, which improves the efficiency and ...



Customers usually keep this item. Three redundant power inputs, more power supply guarantee, each channel supports anti-reverse connection. This product has fewer returns than average compared to ...



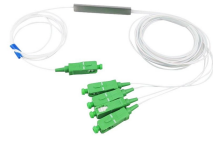
Get reliable, secure connectivity out of the box. Securely connect and power your industrial devices with the compact, rugged IE1000 Series Switches that are engineered for harsh environments and ...



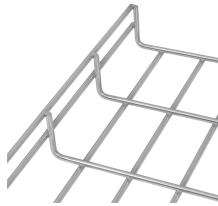
Our Industrial Ethernet Switch portfolio comprises Managed and Unmanaged Switches with Gigabit, PoE, IEC 61850 certification, and for DIN rail mounting.



1x 100Mbps uplink port + 4x 100Mbps downlink ports Industrial Ethernet switch, supporting 1x 10 / 100Base TX uplink port and 4x 10 / 100Base TX downlink ports. The products comply with FCC, CE ...



Find the perfect connection for every industrial application – across automotive, chemical, manufacturing and more. Designed for use at all network levels, they offer ultra-efficient and future-proof ...



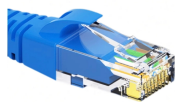
This compact 5-port industrial Ethernet switch is engineered to deliver fast, reliable network connectivity and durability in the most demanding industrial environments.



Rugged, and with no configuration required, Perle has over 400 models of Unmanaged Industrial Ethernet Switches with a vast array of options including 10/100/1000 Ethernet, PoE, and fiber.



The 100M 9-port industrial Ethernet switch has 9 RJ45 electrical ports. The device adopts a fanless and low-power design, and has the advantages of easy use, small size, and simple maintenance.



Moxa's Layer 2 managed switches feature industrial-grade reliability, network redundancy, and security features based on the IEC 62443 standard.

## Contact Us

For more information, pricing, or custom network solutions, please contact us:

Website: <https://hashherbcafe.co.za>

Email: [hello@hashherbcafe.co.za](mailto:hello@hashherbcafe.co.za)

Phone: +27 63 814 7295

Address: 15 Galaxy Road, Linbro Business Park, Johannesburg, 2065, South Africa

This document is for informational purposes only. Specifications subject to change without notice.

