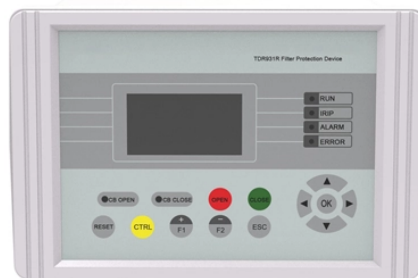


10 Gigabit Switch Fiber Port Speed



Overview

Each 10 gig SFP switch has 4x1G/10G SFP/SFP+ ports, ideal for efficient fiber aggregation and high-density fiber connectivity solutions. These 10 Gbps switches also come with 10/100/1000Mbps Ethernet ports to upgrade your network's bandwidth and performance using your existing. 10 Gigabit SFP switches proudly manufactured in the USA by Versitron are available in 28, 36, and 52 port sizes with managed configuration capability. These 10. 8 Port 10Gb SFP+ Web Managed Fiber Switch | Multi-Gig 10G-2. 5G Adaptive | Fanless | 160G Bandwidth | Jumbo Frames/ VLAN/ QoS, Only Compatible with TP-Link, Real HD 10G SFP+ Module, NOT Plug & Play 1Gb □10Gb Super-Fast Fiber Switch□This 10 gigabit switch features 8 x 10G SFP+ ports and 160Gbps. NETGEAR is the first networking provider to deliver 10-Gigabit copper (10GBASE-T) switching solutions spanning the Plus, Smart and Fully Managed categories. 8-port 10GbE Copper switch pricing starting from \$800 (varies based on region). To date, 10GbE connectivity has often involved costly fiber. In this guide, we've tested and reviewed the best 10Gb switches to help you make an informed decision. From performance to features and value for money, we will walk you through everything you need to know to pick the

ideal 10Gb switch for your needs. Cat6 is rated for 55 meters at 10 Gbps.

10 Gigabit Switch Fiber Port Speed



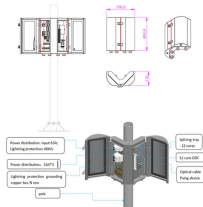
In practical terms, 10 100 1000 Base T refers to Ethernet ports capable of operating at 10Mbps, 100Mbps, or 1000Mbps (1Gbps) using standard RJ45 connectors and twisted-pair cabling such as ...



This guide aims to discuss everything concerning the 10 Gb network switches, including their features, practical uses, and benefits.



With five 10Gbps ports, this switch provides up to 100Gbps of switching capacity, enabling seamless handling of bandwidth-intensive applications such as 8K video streaming, 10G ...



The FortiSwitch-248B-DPS is a high performance 10/100/1000 Ethernet switch with quad dual-speed 1/10 SFP+ fiber uplinks ports, allowing up to 40 Gbps of core traffic.



Port Speed: Ensure the switch supports 10GbE or multi-gigabit options like 2.5GbE and 5GbE. Port Types: Choose between RJ45 ports for copper or SFP ports for fiber optic connections, depending ...



Cat6 is rated for 55 meters at 10 Gbps. Cat6a is rated 10 Gbps for 100 meters. Fiber runs can be much longer. The specific distance depends on the type of fiber and optics used. Going to 10 ...



Learn how to choose the right 10gb switch for your network. Discover the top OmniConverter models from Omnitron Systems for both home and enterprise use.



The 12-port 10-Gigabit Smart Switch, offers twelve (12) 10GbE copper connectivity ports and two (2) shared 10 GbE fiber SFP+ ports as well as an extensive set of L2+/Layer 3 Lite network features.



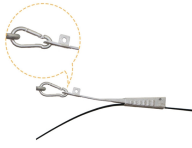
Port Speed: Ensure the switch supports 10GbE or multi-gigabit options like 2.5GbE and 5GbE. Port Types: Choose between RJ45 ports for copper or SFP ports for ...



10 Gigabit SFP Switches 10 Gigabit SFP switches proudly manufactured in the USA by Versitron are available in 28, 36, and 52 port sizes with managed configuration capability. Each 10 gig SFP switch ...



This guide aims to discuss everything concerning the 10 Gb network switches, including their features, practical uses, and benefits.



□10Gb Super-Fast Fiber Switch□This 10 gigabit switch features 8 x 10G SFP+ ports and 160Gbps switching capacity, providing higher-speed connectivity for your devices and allowing you to easily ...

Contact Us

For more information, pricing, or custom network solutions, please contact us:

Website: <https://hashherbcafe.co.za>

Email: hello@hashherbcafe.co.za

Phone: +27 63 814 7295

Address: 15 Galaxy Road, Linbro Business Park, Johannesburg, 2065, South Africa

This document is for informational purposes only. Specifications subject to change without notice.

